

www.genstartech.com



F SERIES FILTERS

Technology for a Better Future

F SERIES FILTER

INLINE FILTER



SS-F4-VM4-15 SS-F4-NT4-TF4-7 SS-F4-TF4-2 SS-F4-FNT4-NT4-60

■ FEATURES

- Applicable when space is limited
- Stainless steel 316 material for body and filter element
- Sintered filter element provides fine filtration
- Maximum working pressure:
F2&F4: 4500 psig (310 bar)
F6&F8: 3000 psig (206 bar)
- Working temperature: -18°F ~ 900°F (-28°C ~ 482°C)
- Maximum differential pressure: 1000 psig
- End connections include: GENLOK® tube fittings, NPT fittings, BSP/ISO tapered, FSR face seal fittings
- 100% tested to ensure optimal performance

T-TYPE FILTER



SS-F6T-TF6-7

SS-F2T-TF2-60

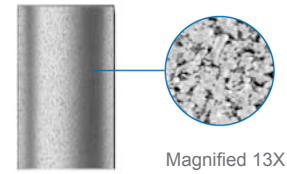
■ FEATURES

- Easily removable filter element for cleaning or replacement without removing filter from the system
- Stainless steel 316 material for body and filter element
- Sintered filter element provides fine filtration
- Maximum working pressure: 6000 psig (400 bar)
- Working temperature: -18°F ~ 900°F (-28°C ~ 482°C)
- Maximum differential pressure: 1000 psig
- End connections include: GENLOK® tube fittings, NPT fittings, FSR face seal fittings
- 100% tested to ensure optimal performance

■ FILTER ELEMENT

Filter Series	Filter Element Size	"XX" represents element nominal pore size: 05: 0.5~2 µm 2: 1~4 µm 7: 5~10 µm 15: 11~25 µm 60: 50~75 µm 90: 75~100 µm
F2	SS-F2E-XX	
F4, F2T, F4T	SS-F4E-XX	
F6, F8, F6T, F8T	SS-F8E-XX	

■ SINTERED ELEMENT FEATURE



- Dense structure helps trap fine particles

■ FILTRATION AREA

INLINE FILTER

Filter Series	Filtration Area mm ² (in. ²)
F2	350 (0.55)
F4,	830 (1.3)
F6, F8	1280 (2.0)

T-TYPE FILTER

Filter Series	Filtration Area mm ² (in. ²)
F2T, F4T	830 (1.3)
F6T, F8T	1280 (2.0)

■ FLOW (68°F/20°C)

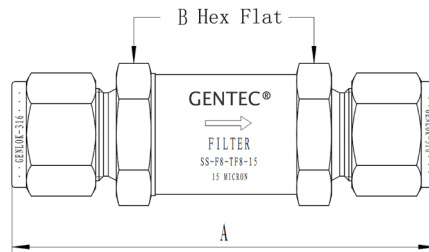
Element Nominal Pore Size (µm)	INLINE FILTER						T-TYPE FILTER					
	F2		F4		F6、F8		F2T		F4T		F6T、F8T	
	Air Flow L/min (ft ³ /min)	Water Flow L/min (gal/min)	Air Flow L/min (ft ³ /min)	Water Flow L/min (gal/min)	Air Flow L/min (ft ³ /min)	Water Flow L/min (gal/min)	Air Flow L/min (ft ³ /min)	Water Flow L/min (gal/min)	Air Flow L/min (ft ³ /min)	Water Flow L/min (gal/min)	Air Flow L/min (ft ³ /min)	Water Flow L/min (gal/min)
0.5	3.33 (0.12)	0.45 (0.12)	13.33 (0.47)	1.00 (0.29)	45.00 (1.59)	2.80 (0.76)	3.33 (0.12)	1.00 (0.29)	13.33 (0.47)	1.00 (0.29)	45.00 (1.59)	2.80 (0.76)
2	16.67 (0.59)	1.50 (0.40)	65.00 (2.30)	4.90 (1.30)	113.33 (4.00)	6.00 (1.60)	16.67 (0.59)	1.50 (0.40)	65.00 (2.30)	4.90 (1.30)	113.33 (4.00)	6.00 (1.60)
7	33.33 (1.18)	1.80 (0.48)	116.66 (4.12)	7.50 (2.00)	191.66 (6.77)	13.00 (3.5)	33.33 (1.18)	1.80 (0.48)	116.66 (4.12)	7.50 (2.00)	191.66 (6.77)	13.00 (3.50)
15	41.66 (1.47)	2.10 (0.58)	133.33 (4.71)	7.90 (2.10)	225.00 (7.95)	15.00 (4.10)	41.66 (1.47)	2.10 (0.58)	133.33 (4.71)	7.90 (2.10)	225.00 (7.95)	15.00 (4.10)
60	66.66 (2.36)	2.60 (0.70)	256.66 (9.07)	17.00 (4.60)	425.00 (15.00)	37.00 (10.00)	66.66 (2.36)	2.60 (0.70)	256.66 (9.07)	14.00 (3.90)	425.00 (15.00)	25.00 (6.70)
90	75.00 (2.65)	2.20 (0.60)	283.33 (10.01)	23.00 (6.10)	450.00 (15.90)	41.00 (11.00)	75.00 (2.65)	2.20 (0.60)	283.33 (10.01)	18.00 (4.90)	450.00 (15.90)	28.00 (7.60)

Inlet Pressure 15 psig (1 bar), Air Flow std L/min (std ft³/min)

Pressure Drop 100 psig (6.8 bar), Water Flow L/min (gal/min)

■ ORDERING INFORMATION AND DIMENSION

INLINE FILTER

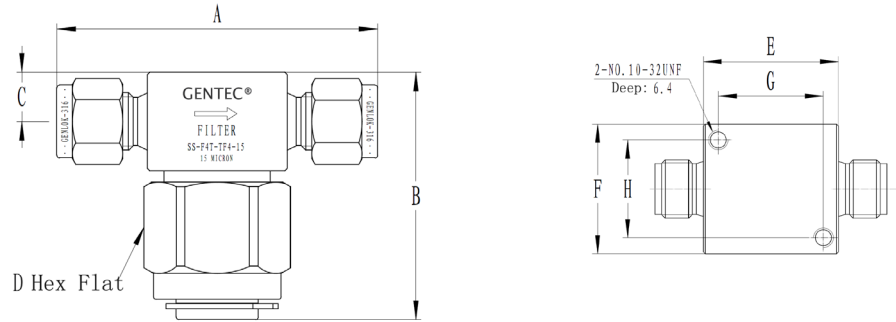


Basic Ordering Number	End Connections		Dimensions in. (mm)		
	Inlet	Outlet	Orifice	A	B
SS-F2-TF2	1/8" GENLOK		0.09 (2.40)	2.35 (59.80)	9/16 (14.30)
SS-F4-TF4	1/4" GENLOK		0.19 (4.70)	2.98 (75.70)	3/4 (19.00)
SS-F6-TF6	3/8" GENLOK		0.30 (7.10)	3.20 (81.20)	1 (25.40)
SS-F8-TF8	1/2" GENLOK		0.41 (10.30)	3.46 (87.90)	
SS-F2-TF3M	3 mm GENLOK		0.09 (2.40)	2.38 (60.50)	9/16 (14.30)
SS-F4-TF6M	6 mm GENLOK		0.19 (4.70)	2.97 (75.90)	3/4 (19.00)
SS-F6-TF8M	8 mm GENLOK		0.25 (6.40)	3.09(78.50)	1 (25.40)
SS-F6-TF10M	10 mm GENLOK		0.30 (7.10)	3.27 (83.10)	
SS-F8-TF12M	12 mm GENLOK		0.41 (10.30)	3.46 (87.90)	
SS-F4-FNT2	1/8" Female NPT		0.19 (4.70)	2.32 (59.00)	3/4 (19.00)
SS-F6-FNT4	1/4" Female NPT		0.30 (7.10)	2.77 (70.30)	1 (25.40)
SS-F8-FNT6	3/8" Female NPT		0.41 (10.30)	2.82 (71.70)	
SS-F4-FRT2	1/8" Female BSP/ISO Tapered		0.19 (4.70)	2.32 (59.00)	3/4 (19.00)
SS-F6-FRT4	1/4" Female BSP/ISO Tapered		0.30 (7.10)	2.77 (70.30)	1 (25.40)
SS-F8-FRT6	3/8" Female BSP/ISO Tapered		0.41 (10.30)	2.82 (71.70)	
SS-F2-NT2	1/8" Male NPT		0.09 (2.40)	1.91 (48.50)	9/16 (14.30)
SS-F4- NT4	1/4" Male NPT		0.19 (4.70)	2.71 (68.90)	3/4 (19.00)
SS-F6- NT6	3/8" Male NPT		0.30 (7.10)	2.80 (71.20)	1 (25.40)
SS-F8- NT8	1/2" Male NPT		0.41 (10.30)	3.15 (80.00)	
SS-F2-RT2	1/8" Male BSP/ISO Tapered		0.09 (2.40)	1.91 (48.50)	9/16 (14.30)
SS-F4- RT4	1/4" Male BSP/ISO Tapered		0.19 (4.70)	2.71 (68.90)	3/4 (19.00)
SS-F6- RT6	3/8" Male BSP/ISO Tapered		0.30 (7.10)	2.80 (71.20)	1 (25.40)
SS-F8- RT8	1/2" Male BSP/ISO Tapered		0.41 (10.30)	3.15 (80.00)	
SS-F2-NT2- TF2	1/8" Male NPT	1/8" GENLOK	0.09 (2.40)	2.15 (54.50)	9/16 (14.30)
SS-F4- NT4- TF4	1/4" Male NPT	1/4" GENLOK	0.19 (4.70)	2.84 (72.30)	3/4 (19.00)
SS-F6- NT6- TF6	3/8" Male NPT	3/8" GENLOK	0.30 (7.10)	3.00 (76.20)	1 (25.40)
SS-F8- NT8- TF8	1/2" Male NPT	1/2" GENLOK	0.41 (10.30)	3.36 (85.30)	
SS-F2-NT2- FNT2	1/8" Male NPT	1/8" Female NPT	0.09 (2.40)	2.01 (51.00)	9/16 (14.30)
SS-F4- NT4- FNT4	1/4" Male NPT	1/4" Female NPT	0.19 (4.70)	2.82 (71.70)	3/4 (19.00)
SS-F6- NT6- FNT6	3/8" Male NPT	3/8" Female NPT	0.30 (7.10)	2.87 (73.00)	1 (25.40)
SS-F4-VM4	1/4" Male FSR		0.19 (4.70)	2.85 (72.50)	3/4 (19.00)
SS-F8-VM8	1/2" Male FSR		0.41 (10.30)	3.35 (85.20)	1 (25.40)

Dimensions are for reference only

ORDERING INFORMATION AND DIMENSION

T-TYPE FILTER



Basic Ordering Number	End Connections		Dimensions in. (mm)	
	Inlet	Outlet	Orifice	A
SS-F2T-TF2	1/8" GENLOK		0.09 (2.40)	2.25 (57.10)
SS-F4T-TF4	1/4" GENLOK		0.18 (4.50)	2.43 (61.80)
SS-F6T-TF6	3/8" GENLOK		0.22 (5.50)	2.81 (71.30)
SS-F8T-TF8	1/2" GENLOK		0.26 (6.50)	3.02 (76.60)
SS-F4T-TF6M	6 mm GENLOK		0.18 (4.50)	2.44 (62.00)
SS-F6T-TF8M	8 mm GENLOK		0.22 (5.50)	2.71 (68.60)
SS-F6T-TF10M	10 mm GENLOK			2.83 (71.80)
SS-F8T-TF12M	12 mm GENLOK		0.26 (6.50)	3.02 (76.60)
SS-F2T-FNT4	1/4" Female NPT		2.40 (0.09)	2.01 (51.00)
SS-F4T-FNT4	1/4" Female NPT		4.50 (0.18)	2.13 (54.00)
SS-F2T-NT2	1/8" Male NPT		0.09 (2.40)	1.83 (46.40)
SS-F4T-NT4	1/4" Male NPT		0.18 (4.50)	2.17 (55.00)
SS-F6T-NT6	3/8" Male NPT		0.22 (5.50)	2.41 (61.30)
SS-F8T-NT8	1/2" Male NPT		0.26 (6.50)	2.81 (71.30)
SS-F4T-VM4	1/4" Male FSR		0.18 (4.50)	2.30 (58.40)
SS-F8T-VM8	1/2" Male FSR		0.26 (6.50)	2.91 (73.90)

Dimensions are for reference only

Dimensions in. (mm)	Filter Series	
	F2T, F4T	F6T, F8T
B	1.87 (47.60)	2.13 (54.00)
C	0.37 (9.50)	0.46 (11.80)
D	1 (25.40)	9/8 (28.60)
E	1.06 (27.00)	1.31 (33.30)
F	1.13 (28.60)	1.25 (31.80)
G	0.71 (18.00)	1.02 (25.90)
H	0.79 (20.00)	0.94 (24.00)

GASKET KITS

Filter Series	Model Number
F2	SS-F2G
F4	SS-F4G
F6, F8	SS-F8G
F2T, F4T	SS-F4TG
F6T, F8T	SS-F8TG

ORDERING MATRIX

SS -	F2T -	TF	6	- NT8	- 05	- BTF2
Materials: SS: 316	Series: (Inline Filter) F2, F4, F6, F8 (T-type Filter) F2T, F4T, F6T, F8T	Inlet Connection Type: TF: GENLOK NT: NPT FNT: NPT(F) RT: BSP/ISO Tapered FRT: BSP/ISO Tapered(F) VM: Face seal fittings	Inlet Connection Sizing: 2: 1/8" 4: 1/4" 6: 3/8" 8: 1/2" 6M: 6 mm 8M: 8 mm 10M: 10 mm 12M: 12 mm	Outlet Connection Type and Size: If outlet connection type is the same as inlet connection type, leave as blank	Element nominal pore size: 05: 0.5 µm 2: 2 µm 7: 7 µm 15: 15 µm 60: 60 µm 90: 90 µm	T-type Filter Bypass/Purge Port Option: Blank: Default option, no bypass/purge port BTF2: 1/8" GENLOK BTF4: 1/4" GENLOK BTF6: 3/8" GENLOK BTF8: 1/2" GENLOK BFNT2: 1/8" NPT BFNT4: 1/4" NPT(F)



Genstar Technologies Company, Inc.

4525 Edison Avenue, Chino, CA 91710, USA

Tel: 909-606-2726

Fax: 909-606-6485

www.genstartech.com