



Cylinder Connections

BSP . DIN . CGA . UHP CGA . CAP . PLUG

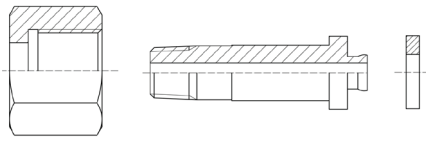
Technology for a Better Future

TABLE OF CONTENTS

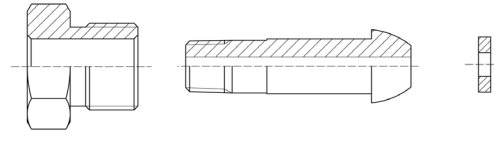
BSP Connections	01
DIN Connections	02
CGA Connections	03-06
CGA Caps	07
CGA Plugs	07
UHP CGA Connections	08-10
UHP CGA Caps	11

CYLINDER CONNECTIONS

■ BSP Connections



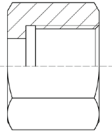
Type A



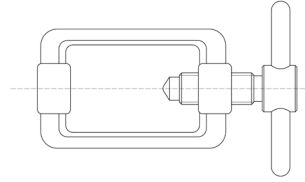
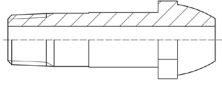
Type B

BS 341	Model No.	Product No.	Material	Nut	Nipple	Type	Washer
No. 1	SS-BS341-1	200418110	Stainless Steel	G3/4-14 (Right Hand)	3" Length (1/4" NPT)	B	Nylon
	B-BS341-1	200418111	Brass				
	BP-BS341-1	200418112	Brass / Chrome Plated				
No. 2	SS-BS341-2	200418120	Stainless Steel	G5/8-14 (Left Hand)	3" Length (1/4" NPT)	B	\
	B-BS341-2	200418121	Brass				
	BP-BS341-2	200418122	Brass / Chrome Plated				
No. 3	SS-BS341-3	200418130	Stainless Steel	G5/8-14 (Right Hand)	3" Length (1/4" NPT)	B	\
	B-BS341-3	200418131	Brass				
	BP-BS341-3	200418132	Brass / Chrome Plated				
No. 4	SS-BS341-4	200418140	Stainless Steel	G5/8-14 (Left Hand)	3" Length (1/4" NPT)	B	\
	B-BS341-4	200418141	Brass				
	BP-BS341-4	200418142	Brass / Chrome Plated				
No. 6	SS-BS341-6	200418150	Stainless Steel	G5/8-14 (Right Hand)	2" Length (1/4" NPT)	A	Nylon
	B-BS341-6	200418151	Brass				
	BP-BS341-6	200418152	Brass / Chrome Plated				
No. 7	SS-BS341-7	200418160	Stainless Steel	G5/8-14 (Left Hand)	2" Length (1/4" NPT)	A	Nylon
	B-BS341-7	200418161	Brass				
	BP-BS341-7	200418162	Brass / Chrome Plated				
No. 8	SS-BS341-8	200418170	Stainless Steel	0.860"-14 (Right Hand)	2" Length (1/4" NPT)	A	Nylon
	B-BS341-8	200418171	Brass				
	BP-BS341-8	200418172	Brass / Chrome Plated				
No. 10	SS-BS341-10	200418180	Stainless Steel	G1/2-14 (Right Hand)	2" Length (1/4" NPT)	A	Nylon
	B-BS341-10	200418181	Brass				
	BP-BS341-10	200418182	Brass / Chrome Plated				
No. 11	SS-BS341-11	200418190	Stainless Steel	G1/2-14 (Left Hand)	2" Length (1/4" NPT)	A	Nylon
	B-BS341-11	200418191	Brass				
	BP-BS341-11	200418192	Brass / Chrome Plated				
No. 13	SS-BS341-13	200418210	Stainless Steel	11/16"-20 (Right Hand)	1-1/2" Length (1/8" NPT)	A	Nylon
	B-BS341-13	200418211	Brass				
	BP-BS341-13	200418212	Brass / Chrome Plated				
No. 14	SS-BS341-14	200418220	Stainless Steel	G3/8-19 (Right Hand)	1-1/2" Length (1/8" NPT)	A	Nylon
	B-BS341-14	200418221	Brass				
	BP-BS341-14	200418222	Brass / Chrome Plated				
No. 15	SS-BS341-15	200418230	Stainless Steel	G3/8-19 (Left Hand)	1-1/2" Length (1/8" NPT)	A	Nylon
	B-BS341-15	200418231	Brass				
	BP-BS341-15	200418232	Brass / Chrome Plated				
No. 16	SS-BS341-16	200418240	Stainless Steel	G1/4-19 (Right Hand)	1-1/8" Length (ø8mm)	A	Nylon
	B-BS341-16	200418241	Brass				
	BP-BS341-16	200418242	Brass / Chrome Plated				
No. 17	SS-BS341-17	200418250	Stainless Steel	G1/4-19 (Left Hand)	1-1/8" Length (ø8mm)	A	Nylon
	B-BS341-17	200418251	Brass				
	BP-BS341-17	200418252	Brass / Chrome Plated				
No. 18	SS-BS341-18	200418260	Stainless Steel	W23-18 (Right Hand)	2-1/2" Length (1/4" NPT)	C	\
	B-BS341-18	200418261	Brass				
	BP-BS341-18	200418262	Brass / Chrome Plated				

DIN Connections



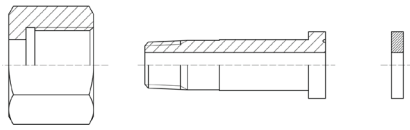
Type C



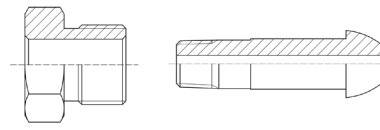
Type D

DIN 477	Model No.	Product No.	Material	Nut	Nipple	Type	Washer
No. 1	SS-DIN477-1	200419110	Stainless Steel	W21.8-14 (Left Hand)	2.35" Length (1/4" NPT)	A	Nylon
	B-DIN477-1	200419111	Brass				
	BP-DIN477-1	200419112	Brass / Chrome Plated				
No. 2	SS-DIN477-2	200419120	Stainless Steel	W21.8-14 (Left Hand)	2.5" Length (1/4" NPT)	A	Nylon
	B-DIN477-2	200419121	Brass				
	BP-DIN477-2	200419122	Brass / Chrome Plated				
No. 3	SS-DIN477-3	200419130	Cast Steel	Yoke	\	D	\
	\	\	\				
	\	\	\				
No. 4	SS-DIN477-4	200419140	Stainless Steel	G3/8-19 (Left Hand)	1-1/2" Length (1/8" NPT)	C	\
	B-DIN477-4	200419141	Brass				
	BP-DIN477-4	200419142	Brass / Chrome Plated				
No. 5	SS-DIN477-5	200419150	Stainless Steel	1"-11 (Left Hand)	2-1/2" Length (1/4" NPT)	A	Nylon
	B-DIN477-5	200419151	Brass				
	BP-DIN477-5	200419152	Brass / Chrome Plated				
No. 6	SS-DIN477-6	200419160	Stainless Steel	W21.8-14 (Right Hand)	2.35" Length (1/4" NPT)	A	Nylon
	B-DIN477-6	200419161	Brass				
	BP-DIN477-6	200419162	Brass / Chrome Plated				
No. 7	SS-DIN477-7	200419170	Stainless Steel	G5/8-14 (Right Hand)	2.35" Length (1/4" NPT)	A	Nylon
	B-DIN477-7	200419171	Brass				
	BP-DIN477-7	200419172	Brass / Chrome Plated				
No. 8	SS-DIN477-8	200419180	Stainless Steel	1"-11 (Right Hand)	2.35" Length (1/4" NPT)	A	Nylon
	B-DIN477-8	200419181	Brass				
	BP-DIN477-8	200419182	Brass / Chrome Plated				
No. 9	SS-DIN477-9	200419190	Stainless Steel	G3/4-14 (Right Hand)	2.35" Length (1/4" NPT)	A	Nylon
	B-DIN477-9	200419191	Brass				
	BP-DIN477-9	200419192	Brass / Chrome Plated				
No. 10	SS-DIN477-10	200419210	Stainless Steel	W24.32-14 (Right Hand)	2.35" Length (1/4" NPT)	A	Nylon
	B-DIN477-10	200419211	Brass				
	BP-DIN477-10	200419212	Brass / Chrome Plated				
No. 11	SS-DIN477-11	200419220	Stainless Steel	G3/8-19 (Right Hand)	1-1/2" Length (1/8" NPT)	A	Nylon
	B-DIN477-11	200419221	Brass				
	BP-DIN477-11	200419222	Brass / Chrome Plated				
No. 12	SS-DIN477-12	200419230	Stainless Steel	G3/4-14 (Right Hand)	3" Length (1/4" NPT)	B	Nylon
	B-DIN477-12	200419231	Brass				
	BP-DIN477-12	200419232	Brass / Chrome Plated				
No. 13	SS-DIN477-13	200419240	Stainless Steel	G5/8-14 (Right Hand)	3" Length (1/4" NPT)	B	Nylon
	B-DIN477-13	200419241	Brass				
	BP-DIN477-13	200419242	Brass / Chrome Plated				
No. 14	SS-DIN477-14	200419250	Stainless Steel	M19*1.5 (Left Hand)	3" Length (1/4" NPT)	A	Nylon
	B-DIN477-14	200419251	Brass				
	BP-DIN477-14	200419252	Brass / Chrome Plated				
No. 15	SS-DIN477-15	200419260	Stainless Steel	W21.8-14 (Left Hand)	3" Length (1/4" NPT)	A	Nylon
	B-DIN477-15	200419261	Brass				
	BP-DIN477-15	200419262	Brass / Chrome Plated				

■ CGA Connections



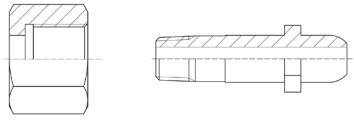
Type A



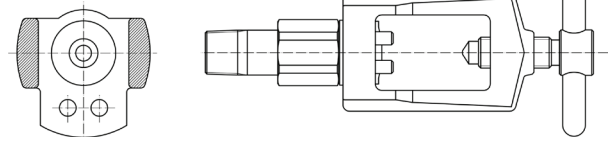
Type B

CGA	Model No.	Product No.	Material	Nut	Nipple	Type	Washer
170	SS-CGA170	200410210	Stainless Steel	0.5625-18UNF (Right Hand)	1-1/2" Length (1/8" NPT)	A	Nylon
	B-CGA170	200410230	Brass				
	BP-CGA170	200410240	Brass / Chrome Plated				
180	SS-CGA180	200410310	Stainless Steel	0.625-18UNF (Right Hand)	1-1/2" Length (1/8" NPT)	A	Nylon
	BP-CGA180	200410330	Brass				
	B-CGA180	200410340	Brass / Chrome Plated				
200	SS-CGA200	200410410	Stainless Steel	0.625-20NGO (Right Hand)	1-1/8" Length (1/8" NPT)	C	\
	B-CGA200	200410430	Brass				
	BP-CGA200	200410440	Brass / Chrome Plated				
280	SS-CGA280	200410610	Stainless Steel	0.750-14NGO (Right Hand)	2-1/2" Length (1/4" NPT)	C	\
	B-CGA280	200410630	Brass				
	BP-CGA280	200410640	Brass / Chrome Plated				
290	SS-CGA290	200410710	Stainless Steel	0.750-14NGO (Left Hand)	2-1/2" Length (1/4" NPT)	C	\
	B-CGA290	200410730	Brass				
	BP-CGA290	200410740	Brass / Chrome Plated				
296	SS-CGA296	200410810	Stainless Steel	0.803-14UNS (Right Hand)	3" Length (1/4" NPT)	B	\
	B-CGA296	200410830	Brass				
	BP-CGA296	200410840	Brass/Chrome Plated				
300	SS-CGA300	200410910	Stainless Steel	0.830-14NGO (Right Hand)	2-1/2" Length (1/4" NPT)	C	\
	B-CGA300	200410930	Brass				
	BP-CGA300	200410940	Brass / Chrome Plated				
320	SS-CGA320	200413010	Stainless Steel	0.830-14NGO (Right Hand)	2" Length (1/4" NPT)	A	Nylon
	B-CGA320	200413030	Brass				
	BP-CGA320	200413040	Brass / Chrome Plated				
326	SS-CGA326	200413110	Stainless Steel	0.830-14NGO (Right Hand)	2-1/2" Length (1/4" NPT)	C	\
	B-CGA326	200413130	Brass				
	BP-CGA326	200413140	Brass / Chrome Plated				
330	SS-CGA330	200413210	Stainless Steel	0.830-14NGO (Left Hand)	2" Length (1/4" NPT)	A	Nylon
	B-CGA330	200413230	Brass				
	BP-CGA330	200413240	Brass / Chrome Plated				
346	SS-CGA346	200413310	Stainless Steel	0.830-14NGO (Right Hand)	2-1/2" Length (1/4" NPT)	A	Nylon
	B-CGA346	200413330	Brass				
	BP-CGA346	200413340	Brass / Chrome Plated				
347	SS-CGA347	200413410	Stainless Steel	0.830-14NGO (Right Hand)	3" Length (1/4" NPT)	A	Nylon
	B-CGA347	200413430	Brass				
	BP-CGA347	200413440	Brass / Chrome Plated				
350	SS-CGA350	200413510	Stainless Steel	0.830-14NGO (Left Hand)	2-1/2" Length (1/4" NPT)	A	Nylon
	B-CGA350	200413530	Brass				
	BP-CGA350	200413540	Brass / Chrome Plated				
410	SS-CGA410	200413610	Stainless Steel	0.855-14NGO (Left Hand)	2-1/2" Length (1/4" NPT)	A	Nylon
	B-CGA410	200413630	Brass				
	BP-CGA410	200413640	Brass / Chrome Plated				

■ CGA Connections



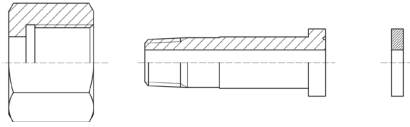
Type C



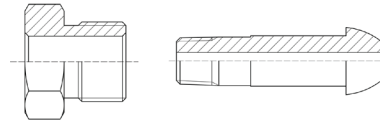
Type D

CGA	Model No.	Product No.	Material	Nut	Nipple	Type	Washer
415	SS-CGA415	200413710	Stainless Steel	0.855-14NGO (Left Hand)	2" Length (1/4" NPT)	A	Nylon
	B-CGA415	200413730	Brass				
	BP-CGA415	200413740	Brass / Chrome Plated				
500	SS-CGA500	200413810	Stainless Steel	0.880-14NGO (Right Hand)	3" Length (1/4" NPT)	B	\
	B-CGA500	200413830	Brass				
	BP-CGA500	200413840	Brass / Chrome Plated				
510	SS-CGA510	200413910	Stainless Steel	0.880-14NGO (Left Hand)	3" Length (1/4" NPT)	B	\
	B-CGA510	200413930	Brass				
	BP-CGA510	200413940	Brass / Chrome Plated				
520	SS-CGA520	200412010	Stainless Steel	0.895-18NGO (Right Hand)	2" Length (1/4" NPT)	C	\
	B-CGA520	200412030	Brass				
	BP-CGA520	200412040	Brass / Chrome Plated				
540	SS-CGA540	200412110	Stainless Steel	0.908-14NGO (Right Hand)	2-1/2" Length (1/4" NPT)	C	\
	B-CGA540	200412130	Brass				
	BP-CGA540	200412140	Brass / Chrome Plated				
555	SS-CGA555	200412210	Stainless Steel	0.908-14NGO (Left Hand)	2-1/2" Length (1/4" NPT)	C	\
	B-CGA555	200412230	Brass				
	BP-CGA555	200412240	Brass / Chrome Plated				
577	SS-CGA577	200412310	Stainless Steel	0.965-14NGO (Right Hand)	2-1/2" Length (1/4" NPT)	C	\
	B-CGA577	200412330	Brass				
	BP-CGA577	200412340	Brass / Chrome Plated				
580	SS-CGA580	200412410	Stainless Steel	0.960-14NGO (Right Hand)	3" Length (1/4" NPT)	B	\
	B-CGA580	200412430	Brass				
	BP-CGA580	200412440	Brass / Chrome Plated				
590	SS-CGA590	200412510	Stainless Steel	0.960-14NGO (Left Hand)	3" Length (1/4" NPT)	B	\
	B-CGA590	200412530	Brass				
	BP-CGA590	200412540	Brass / Chrome Plated				
620	SS-CGA620	200412610	Stainless Steel	1.035-14NGO (Right Hand)	3" Length (1/4" NPT)	C	\
	B-CGA620	200412630	Brass				
	BP-CGA620	200412640	Brass / Chrome Plated				
660	SS-CGA660	200412710	Stainless Steel	1.035-14NGO (Right Hand)	2" Length (1/4" NPT)	A	Nylon
	B-CGA660	200412730	Brass				
	BP-CGA660	200412740	Brass / Chrome Plated				
668	SS-CGA668	200412810	Stainless Steel	1.035-14NGO (Right Hand)	2-1/2" Length (1/4" NPT)	A	Nylon
	B-CGA668	200412830	Brass				
	BP-CGA668	200412840	Brass / Chrome Plated				
670	SS-CGA670	200412910	Stainless Steel	1.035-14NGO (Left Hand)	2" Length (1/4" NPT)	A	Nylon
	B-CGA670	200412930	Brass				
	BP-CGA670	200412940	Brass / Chrome Plated				
677	SS-CGA677	200413010	Stainless Steel	1.035-14NGO (Left Hand)	2-1/2" Length (1/4" NPT)	A	Nylon
	B-CGA677	200413030	Brass				
	BP-CGA677	200413040	Brass / Chrome Plated				

■ CGA Connections



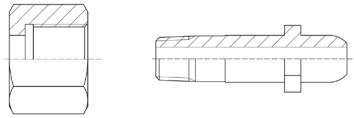
Type A



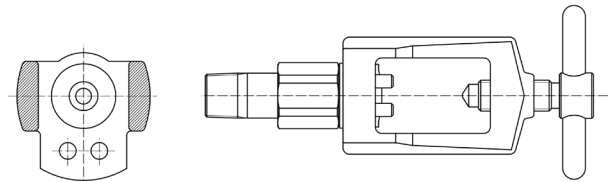
Type B

CGA	Model No.	Product No.	Material	Nut	Nipple	Type	Washer
678	SS-CGA678	200413110	Stainless Steel	1.035-14NGO (Left Hand)	2-1/2" Length (1/4" NPT)	A	NYLON
	B-CGA678	200413130	Brass				
	BP-CGA678	200413140	Brass / Chrome Plated				
679	SS-CGA679	200413210	Stainless Steel	1.035-14NGO (Left Hand)	2-1/2" Length (1/4" NPT)	C	\
	B-CGA679	200413230	Brass				
	BP-CGA679	200413240	Brass / Chrome Plated				
680	SS-CGA680	200413310	Stainless Steel	1.040-14NGO (Right Hand)	3" Length (1/4" NPT)	C	\
	B-CGA680	200413330	Brass				
	BP-CGA680	200413340	Brass / Chrome Plated				
695	SS-CGA695	200413410	Stainless Steel	1.040-14NGO (Left Hand)	3" Length (1/4" NPT)	C	\
	B-CGA695	200413430	Brass				
	BP-CGA695	200413440	Brass / Chrome Plated				
701	SS-CGA701	200413510	Stainless Steel	1.108-14NGO (Right Hand)	3" Length (1/4" NPT)	B	\
	B-CGA701	200413530	Brass				
	BP-CGA701	200413540	Brass / Chrome Plated				
702	SS-CGA702	200413610	Stainless Steel	1.120-14NGO (Right Hand)	3" Length (1/4" NPT)	C	\
	B-CGA702	200413630	Brass				
	BP-CGA702	200413640	Brass / Chrome Plated				
703	SS-CGA703	200413710	Stainless Steel	1.120-14NGO (Left Hand)	3" Length (1/4" NPT)	A	Nylon
	B-CGA703	200413730	Brass				
	BP-CGA703	200413740	Brass / Chrome Plated				
705	SS-CGA705	200413810	Stainless Steel	1.125-14UNS (Right Hand)	2" Length (1/4" NPT)	C	\
	B-CGA705	200413830	Brass				
	BP-CGA705	200413840	Brass / Chrome Plated				
750	SS-CGA750	200413910	Stainless Steel	1.125-14UNS (Left Hand)	2-1/2" Length (1/4" NPT)	A	Nylon
	B-CGA750	200413930	Brass				
	BP-CGA750	200413940	Brass / Chrome Plated				
755	SS-CGA755	200414010	Stainless Steel	1.125-14UNS (Left Hand)	2-1/2" Length (1/4" NPT)	A	Nylon
	B-CGA755	200414030	Brass				
	BP-CGA755	200414040	Brass / Chrome Plated				
870	CGA870-1	200414110	Brass / Chrome Plated	Yoke	1-1/8" Length	D	Neoprene
	CGA870-2	200414120	Brass / Chrome Plated		2" Length		
	CGA870-3	200414130	Brass / Chrome Plated		3-1/2" Length		
880	CGA880-1	200414210	Brass / Chrome Plated	Yoke	1-1/8" Length	D	Neoprene
	CGA880-2	200414220	Brass / Chrome Plated		2" Length		
	CGA880-3	200414230	Brass / Chrome Plated		3-1/2" Length		
890	CGA890-1	200414310	Brass / Chrome Plated	Yoke	1-1/8" Length	D	Neoprene
	CGA890-2	200414320	Brass / Chrome Plated		2" Length		
	CGA890-3	200414330	Brass / Chrome Plated		3-1/2" Length		
900	CGA900-1	200414410	Brass / Chrome Plated	Yoke	1-1/8" Length	D	Neoprene
	CGA900-2	200414420	Brass / Chrome Plated		2" Length		
	CGA900-3	200414430	Brass / Chrome Plated		3-1/2" Length		

CGA Connections



Type C



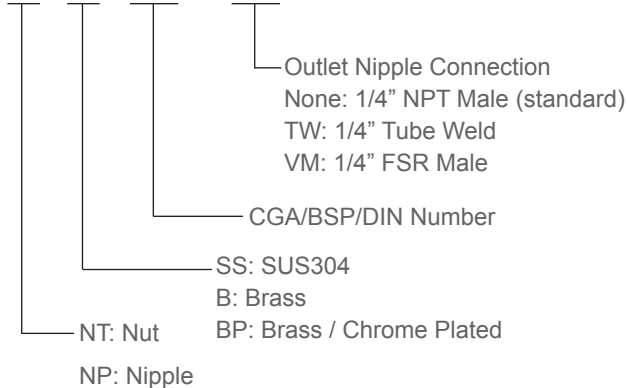
Type D

CGA	Model No.	Product No.	Material	Nut	Nipple	Type	Washer
910	CGA910-1	200414510	Brass / Chrome Plated	Yoke	1-1/8" Length	D	Neoprene
	CGA910-2	200414520	Brass / Chrome Plated		2" Length		
	CGA910-3	200414530	Brass / Chrome Plated		3-1/2" Length		
920	CGA920-1	200414610	Brass / Chrome Plated	Yoke	1-1/8" Length	D	Neoprene
	CGA920-2	200414620	Brass / Chrome Plated		2" Length		
	CGA920-3	200414630	Brass / Chrome Plated		3-1/2" Length		
930	CGA930-1	200414710	Brass / Chrome Plated	Yoke	1-1/8" Length	D	Neoprene
	CGA930-2	200414720	Brass / Chrome Plated		2" Length		
	CGA930-3	200414730	Brass / Chrome Plated		3-1/2" Length		
940	CGA940-1	200414810	Brass / Chrome Plated	Yoke	1-1/8" Length	D	Neoprene
	CGA940-2	200414820	Brass / Chrome Plated		2" Length		
	CGA940-3	200414830	Brass / Chrome Plated		3-1/2" Length		
950	CGA950-1	200414910	Brass / Chrome Plated	Yoke	1-1/8" Length	D	Neoprene
	CGA950-2	200414920	Brass / Chrome Plated		2" Length		
	CGA950-3	200414930	Brass / Chrome Plated		3-1/2" Length		
960	CGA960-1	200414110	Brass / Chrome Plated	Yoke	1-1/8" Length	D	Neoprene
	CGA960-2	200414120	Brass / Chrome Plated		2" Length		
	CGA960-3	200414130	Brass / Chrome Plated		3-1/2" Length		
965	CGA965-1	200415110	Brass / Chrome Plated	Yoke	1-1/8" Length	D	Neoprene
	CGA965-2	200415120	Brass / Chrome Plated		2" Length		
	CGA965-3	200415130	Brass / Chrome Plated		3-1/2" Length		
973	CGA973-1	200415210	Brass / Chrome Plated	Yoke	1-1/8" Length	D	Neoprene
	CGA973-2	200415220	Brass / Chrome Plated		2" Length		
	CGA973-3	200415230	Brass / Chrome Plated		3-1/2" Length		

Ordering Information:

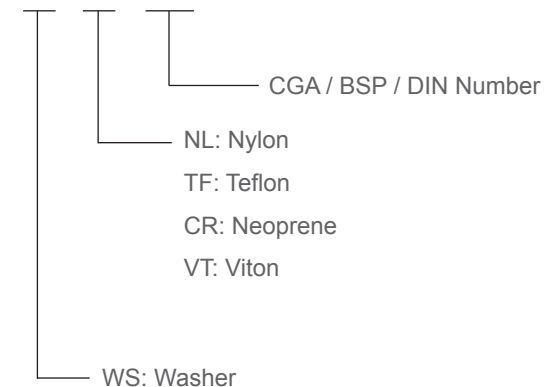
Nut & Nipple:

NT - SS - CGA*** - TW



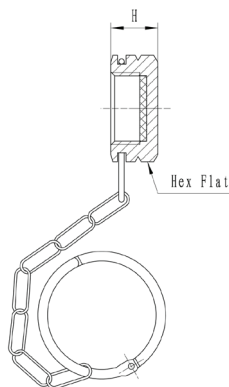
Washer:

WS - NL - CGA***

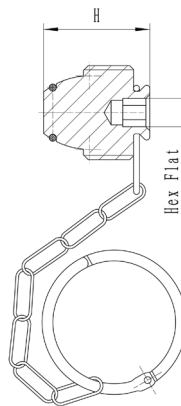


Please contact GENTEC for any special request.

■ CGA Caps, CGA Plugs



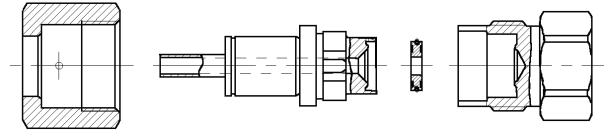
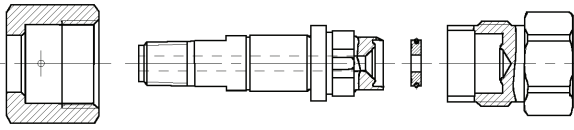
CGA Caps



CGA Plugs

	CGA	Model No.	Product No.	Material	Hex Flat	Length	Washer	Gas Tight
CAP	320	SS-CGA-30C	206703080	Stainless Steel	1-1/16"	.54"	Nylon	No
	326	SS-CGA-30C	206703080	Stainless Steel	1-1/16"	.54"	Nylon	No
	330	SS-CGA-33C	206030060	Stainless Steel	1-1/16"	.54"	Nylon	No
	346	SS-CGA-30C	206703080	Stainless Steel	1-1/16"	.54"	Nylon	No
	350	SS-CGA-350GTC	206703090	Stainless Steel	1-1/16"	.54"	/	Yes
	660	SS-CGA-66C	206703070	Stainless Steel	1-1/4"	.54"	Nylon	No
	670	SS-CGA-67C	206703110	Stainless Steel	1-1/4"	.54"	Nylon	No
	678	SS-CGA-67C	206703110	Stainless Steel	1-1/4"	.54"	Nylon	No
	679	SS-CGA-67C	206703110	Stainless Steel	1-1/4"	.54"	Nylon	No
	705	SS-CGA-705C	206703120	Stainless Steel	1-3/8"	.54"	Nylon	No
Plug	510	SS-CGA-51P	206703130	Stainless Steel	1/4"	1.08"	O-ring	Yes
	580	SS-CGA-58P	206703100	Stainless Steel	1/4"	1.08"	O-ring	Yes
	590	SS-CGA-59P	206703140	Stainless Steel	1/4"	1.08"	O-ring	Yes

UHP CGA Connections



UHP CGA	Model No.	Product No.	Outlet Connection	Nipple	Nut	Washer	Cap
632	CGA632-NT4	200416320	1/4" NPT Male	SL-NP-632-NT4	SS-N-63-00	NI-G-63	/
	CGA632-TW4	200416321	1/4" Tube Weld	SL-NP-632-TW4	SS-N-63-00	NI-G-63	
	CGA632-VM4	200416322	1/4" FSR Male	SL-NP-632-VM4	SS-N-63-00	NI-G-63	
	CGA632-NT4-SET	200416323	1/4" NPT Male	SL-NP-632-NT4	SS-N-63-00	NI-G-63	SL-BG-63
	CGA632-TW4-SET	200416324	1/4" Tube Weld	SL-NP-632-TW4	SS-N-63-00	NI-G-63	
	CGA632-VM4-SET	200416325	1/4" FSR Male	SL-NP-632-VM4	SS-N-63-00	NI-G-63	
1.030-14NGO-RH-INT Maximum Operating Pressure: 3000 psig							
634	CGA634-NT4	200416340	1/4" NPT Male	SL-NP-634-NT4	SS-N-63-00	NI-G-63	/
	CGA634-TW4	200416341	1/4" Tube Weld	SL-NP-634-TW4	SS-N-63-00	NI-G-63	
	CGA634-VM4	200416342	1/4" FSR Male	SL-NP-634-VM4	SS-N-63-00	NI-G-63	
	CGA634-NT4-SET	200416343	1/4" NPT Male	SL-NP-634-NT4	SS-N-63-00	NI-G-63	SL-BG-63
	CGA634-TW4-SET	200416344	1/4" Tube Weld	SL-NP-634-TW4	SS-N-63-00	NI-G-63	
	CGA634-VM4-SET	200416345	1/4" FSR Male	SL-NP-634-VM4	SS-N-63-00	NI-G-63	
1.030-14NGO-RH-INT Maximum Operating Pressure: 3000 psig							
636	CGA636-NT4	200416360	1/4" NPT Male	SL-NP-636-NT4	SS-N-63-00	NI-G-63	/
	CGA636-TW4	200416361	1/4" Tube Weld	SL-NP-636-TW4	SS-N-63-00	NI-G-63	
	CGA636-VM4	200416362	1/4" FSR Male	SL-NP-636-VM4	SS-N-63-00	NI-G-63	
	CGA636-NT4-SET	200416363	1/4" NPT Male	SL-NP-636-NT4	SS-N-63-00	NI-G-63	SL-BG-63
	CGA636-TW4-SET	200416364	1/4" Tube Weld	SL-NP-636-TW4	SS-N-63-00	NI-G-63	
	CGA636-VM4-SET	200416365	1/4" FSR Male	SL-NP-636-VM4	SS-N-63-00	NI-G-63	
1.030-14NGO-RH-INT Maximum Operating Pressure: 3000 psig							
638	CGA638-NT4	200416380	1/4" NPT Male	SL-NP-638-NT4	SS-N-63-00	NI-G-63	/
	CGA638-TW4	200416381	1/4" Tube Weld	SL-NP-638-TW4	SS-N-63-00	NI-G-63	
	CGA638-VM4	200416382	1/4" FSR Male	SL-NP-638-VM4	SS-N-63-00	NI-G-63	
	CGA638-NT4-SET	200416383	1/4" NPT Male	SL-NP-638-NT4	SS-N-63-00	NI-G-63	SL-BG-63
	CGA638-TW4-SET	200416384	1/4" Tube Weld	SL-NP-638-TW4	SS-N-63-00	NI-G-63	
	CGA638-VM4-SET	200416385	1/4" FSR Male	SL-NP-638-VM4	SS-N-63-00	NI-G-63	
1.030-14NGO-RH-INT Maximum Operating Pressure: 3000 psig							
640	CGA640-NT4	200416400	1/4" NPT Male	SL-NP-640-NT4	SS-N-63-00	NI-G-63	/
	CGA640-TW4	200416401	1/4" Tube Weld	SL-NP-640-TW4	SS-N-63-00	NI-G-63	
	CGA640-VM4	200416402	1/4" FSR Male	SL-NP-640-VM4	SS-N-63-00	NI-G-63	
	CGA640-NT4-SET	200416403	1/4" NPT Male	SL-NP-640-NT4	SS-N-63-00	NI-G-63	SL-BG-63
	CGA640-TW4-SET	200416404	1/4" Tube Weld	SL-NP-640-TW4	SS-N-63-00	NI-G-63	
	CGA640-VM4-SET	200416405	1/4" FSR Male	SL-NP-640-VM4	SS-N-63-00	NI-G-63	
1.030-14NGO-RH-INT Maximum Operating Pressure: 3000 psig							

■ UHP CGA Connections



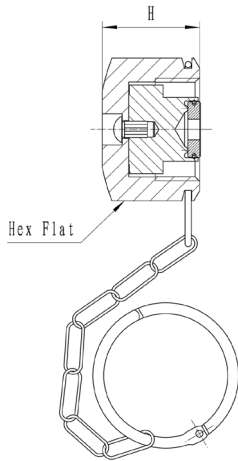
UHP CGA	Model No.	Product No.	Outlet Connection	Nipple	Nut	Washer	Cap
642	CGA642-NT4	200416420	1/4" NPT Male	SL-NP-642-NT4	SS-N-63-00	NI-G-63	/
	CGA642-TW4	200416421	1/4" Tube Weld	SL-NP-642-TW4	SS-N-63-00	NI-G-63	
	CGA642-VM4	200416422	1/4" FSR Male	SL-NP-642-VM4	SS-N-63-00	NI-G-63	
	CGA642-NT4-SET	200416423	1/4" NPT Male	SL-NP-642-NT4	SS-N-63-00	NI-G-63	SL-BG-63
	CGA642-TW4-SET	200416424	1/4" Tube Weld	SL-NP-642-TW4	SS-N-63-00	NI-G-63	
	CGA642-VM4-SET	200416425	1/4" FSR Male	SL-NP-642-VM4	SS-N-63-00	NI-G-63	
1.030-14NGO-RH-INT			Maximum Operating Pressure: 3000 psig				
712	CGA712-NT4	200417120	1/4" NPT Male	SL-NP-712-NT4	SS-N-70-00	NI-G-63	/
	CGA712-TW4	200417121	1/4" Tube Weld	SL-NP-712-TW4	SS-N-70-00	NI-G-63	
	CGA712-VM4	200417122	1/4" FSR Male	SL-NP-712-VM4	SS-N-70-00	NI-G-63	
	CGA712-NT4-SET	200417123	1/4" NPT Male	SL-NP-712-NT4	SS-N-70-00	NI-G-63	SL-BG-71
	CGA712-TW4-SET	200417124	1/4" Tube Weld	SL-NP-712-TW4	SS-N-70-00	NI-G-63	
CGA712-VM4-SET	200417125	1/4" FSR Male	SL-NP-712-VM4	SS-N-70-00	NI-G-63		
1.125-14NGO-RH-INT			Maximum Operating Pressure: 3000 psig				
714	CGA714-NT4	200417140	1/4" NPT Male	SL-NP-714-NT4	SS-N-70-00	NI-G-63	/
	CGA714-TW4	200417141	1/4" Tube Weld	SL-NP-714-TW4	SS-N-70-00	NI-G-63	
	CGA714-VM4	200417142	1/4" FSR Male	SL-NP-714-VM4	SS-N-70-00	NI-G-63	
	CGA714-NT4-SET	200417143	1/4" NPT Male	SL-NP-714-NT4	SS-N-70-00	NI-G-63	SL-BG-71
	CGA714-TW4-SET	200417144	1/4" Tube Weld	SL-NP-714-TW4	SS-N-70-00	NI-G-63	
	CGA714-VM4-SET	200417145	1/4" FSR Male	SL-NP-714-VM4	SS-N-70-00	NI-G-63	
1.125-14NGO-RH-INT			Maximum Operating Pressure: 3000 psig				
716	CGA716-NT4	200417160	1/4" NPT Male	SL-NP-716-NT4	SS-N-70-00	NI-G-63	/
	CGA716-TW4	200417161	1/4" Tube Weld	SL-NP-716-TW4	SS-N-70-00	NI-G-63	
	CGA716-VM4	200417162	1/4" FSR Male	SL-NP-716-VM4	SS-N-70-00	NI-G-63	
	CGA716-NT4-SET	200417163	1/4" NPT Male	SL-NP-716-NT4	SS-N-70-00	NI-G-63	SL-BG-71
	CGA716-TW4-SET	200417164	1/4" Tube Weld	SL-NP-716-TW4	SS-N-70-00	NI-G-63	
	CGA716-VM4-SET	200417165	1/4" FSR Male	SL-NP-716-VM4	SS-N-70-00	NI-G-63	
1.125-14NGO-RH-INT			Maximum Operating Pressure: 3000 psig				
718	CGA718-NT4	200417180	1/4" NPT Male	SL-NP-718-NT4	SS-N-70-00	NI-G-63	/
	CGA718-TW4	200417181	1/4" Tube Weld	SL-NP-718-TW4	SS-N-70-00	NI-G-63	
	CGA718-VM4	200417182	1/4" FSR Male	SL-NP-718-VM4	SS-N-70-00	NI-G-63	
	CGA718-NT4-SET	200417183	1/4" NPT Male	SL-NP-718-NT4	SS-N-70-00	NI-G-63	SL-BG-71
	CGA718-TW4-SET	200417184	1/4" Tube Weld	SL-NP-718-TW4	SS-N-70-00	NI-G-63	
	CGA718-VM4-SET	200417185	1/4" FSR Male	SL-NP-718-VM4	SS-N-70-00	NI-G-63	
1.125-14NGO-RH-INT			Maximum Operating Pressure: 3000 psig				

UHP CGA Connection



UHP CGA	Model No.	Product No.	Outlet Connection	Nipple	Nut	Washer	Cap
720	CGA720-NT4	200417200	1/4" NPT Male	SL-NP-720-NT4	SS-N-70-00	NI-G-63	/
	CGA720-TW4	200417201	1/4" Tube Weld	SL-NP-720-TW4	SS-N-70-00	NI-G-63	
	CGA720-VM4	200417202	1/4" FSR Male	SL-NP-720-VM4	SS-N-70-00	NI-G-63	
	CGA720-NT4-SET	200417203	1/4" NPT Male	SL-NP-720-NT4	SS-N-70-00	NI-G-63	SL-BG-72
	CGA720-TW4-SET	200417204	1/4" Tube Weld	SL-NP-720-TW4	SS-N-70-00	NI-G-63	
	CGA720-VM4-SET	200417205	1/4" FSR Male	SL-NP-720-VM4	SS-N-70-00	NI-G-63	
1.125-14NGO-RH-INT				Maximum Operating Pressure: 3000 psig			
722	CGA722-NT4	200417220	1/4" NPT Male	SL-NP-722-NT4	SS-N-70-00	NI-G-63	/
	CGA722-TW4	200417221	1/4" Tube Weld	SL-NP-722-TW4	SS-N-70-00	NI-G-63	
	CGA722-VM4	200417222	1/4" FSR Male	SL-NP-722-VM4	SS-N-70-00	NI-G-63	
	CGA722-NT4-SET	200417223	1/4" NPT Male	SL-NP-722-NT4	SS-N-70-00	NI-G-63	SL-BG-72
	CGA722-TW4-SET	200417224	1/4" Tube Weld	SL-NP-722-TW4	SS-N-70-00	NI-G-63	
	CGA722-VM4-SET	200417225	1/4" FSR Male	SL-NP-722-VM4	SS-N-70-00	NI-G-63	
1.125-14NGO-RH-INT				Maximum Operating Pressure: 3000 psig			
724	CGA724-NT4	200417240	1/4" NPT Male	SL-NP-724-NT4	SS-N-70-00	NI-G-63	/
	CGA724-TW4	200417241	1/4" Tube Weld	SL-NP-724-TW4	SS-N-70-00	NI-G-63	
	CGA724-VM4	200417242	1/4" FSR Male	SL-NP-724-VM4	SS-N-70-00	NI-G-63	
	CGA724-NT4-SET	200417243	1/4" NPT Male	SL-NP-724-NT4	SS-N-70-00	NI-G-63	SL-BG-72
	CGA724-TW4-SET	200417244	1/4" Tube Weld	SL-NP-724-TW4	SS-N-70-00	NI-G-63	
	CGA724-VM4-SET	200417245	1/4" FSR Male	SL-NP-724-VM4	SS-N-70-00	NI-G-63	
1.125-14NGO-RH-INT				Maximum Operating Pressure: 3000 psig			
726	CGA726-NT4	200417260	1/4" NPT Male	SL-NP-726-NT4	SS-N-70-00	NI-G-63	/
	CGA726-TW4	200417261	1/4" Tube Weld	SL-NP-726-TW4	SS-N-70-00	NI-G-63	
	CGA726-VM4	200417262	1/4" FSR Male	SL-NP-726-VM4	SS-N-70-00	NI-G-63	
	CGA726-NT4-SET	200417263	1/4" NPT Male	SL-NP-726-NT4	SS-N-70-00	NI-G-63	SL-BG-72
	CGA726-TW4-SET	200417264	1/4" Tube Weld	SL-NP-726-TW4	SS-N-70-00	NI-G-63	
	CGA726-VM4-SET	200417265	1/4" FSR Male	SL-NP-726-VM4	SS-N-70-00	NI-G-63	
1.125-14NGO-RH-INT				Maximum Operating Pressure: 3000 psig			
728	CGA728-NT4	200417280	1/4" NPT Male	SL-NP-728-NT4	SS-N-70-00	NI-G-63	/
	CGA728-TW4	200417281	1/4" Tube Weld	SL-NP-728-TW4	SS-N-70-00	NI-G-63	
	CGA728-VM4	200417282	1/4" FSR Male	SL-NP-728-VM4	SS-N-70-00	NI-G-63	
	CGA728-NT4-SET	200417283	1/4" NPT Male	SL-NP-728-NT4	SS-N-70-00	NI-G-63	SL-BG-72
	CGA728-TW4-SET	200417284	1/4" Tube Weld	SL-NP-728-TW4	SS-N-70-00	NI-G-63	
	CGA728-VM4-SET	200417285	1/4" FSR Male	SL-NP-728-VM4	SS-N-70-00	NI-G-63	
1.125-14NGO-RH-INT				Maximum Operating Pressure: 3000 psig			

■ UHP CGA Caps



UHP CGA Caps

	CGA	Model No.	Product No.	Material	Hex Flat	Length	Washer	Gas Tight
UHP Cap	632	SS-DISS-63GTC	206703150	Stainless Steel	1-1/4"	.98"	PCTFE Gasket	Yes
	634	SS-DISS-63GTC	206703150	Stainless Steel	1-1/4"	.98"	PCTFE Gasket	Yes
	636	SS-DISS-63GTC	206703150	Stainless Steel	1-1/4"	.98"	PCTFE Gasket	Yes
	638	SS-DISS-63GTC	206703150	Stainless Steel	1-1/4"	.98"	PCTFE Gasket	Yes
	640	SS-DISS-63GTC	206703150	Stainless Steel	1-1/4"	.98"	PCTFE Gasket	Yes
	642	SS-DISS-63GTC	206703150	Stainless Steel	1-1/4"	.98"	PCTFE Gasket	Yes
	712	SS-DISS-71GTC	206703160	Stainless Steel	1-3/8"	.98"	PCTFE Gasket	Yes
	714	SS-DISS-71GTC	206703160	Stainless Steel	1-3/8"	.98"	PCTFE Gasket	Yes
	716	SS-DISS-71GTC	206703160	Stainless Steel	1-3/8"	.98"	PCTFE Gasket	Yes
	718	SS-DISS-71GTC	206703160	Stainless Steel	1-3/8"	.98"	PCTFE Gasket	Yes
	720	SS-DISS-71GTC	206703160	Stainless Steel	1-3/8"	.98"	PCTFE Gasket	Yes
	722	SS-DISS-71GTC	206703160	Stainless Steel	1-3/8"	.98"	PCTFE Gasket	Yes
	724	SS-DISS-71GTC	206703160	Stainless Steel	1-3/8"	.98"	PCTFE Gasket	Yes
	726	SS-DISS-71GTC	206703160	Stainless Steel	1-3/8"	.98"	PCTFE Gasket	Yes
728	SS-DISS-71GTC	206703160	Stainless Steel	1-3/8"	.98"	PCTFE Gasket	Yes	

■ Gas - Connection Reference Table

Gas	BSP	DIN	CGA	UHP CGA	JIS
Acetylene	BS 341 nr.2	/	510	/	/
Air	BS 341 nr.3	/	346	/	/
Ammonia	BS 341 nr.10	DIN 6	705	720	22-R
Argon	BS 341 nr.3	DIN 6	580	718	22-4 or 23-R
Arsine	/	/	350	632	22-L
Boron Trichloride	/	DIN 8	660	634	/
Boron Trifluoride	/	DIN 8	330	642	22-L
Butane	BS 341 nr.4	/	510	/	/
Carbon Dioxide	BS 341 nr.8	DIN 6	320	716	/
Carbon Monoxide	BS 341 nr.4	DIN 5	350	724	22-L
Cyclopropane	BS 341 nr.4	/	510	/	/
Diborane	/	/	350	632	22-L
Dichlorosilane	/	DIN 5	678	636	/
Diethylzinc	/	/	510	726	/
Ethane	/	/	350	/	/
Ethyl Chloride	/	/	510	/	/
Ethylene	/	/	350	/	/
Ethylene Oxide	/	/	510	/	/
Germane	/	/	350 or 660	632	/
Halocarbon 11 (116)	/	/	660	716	/
Halocarbon 12 (13,23,115)	/	DIN 6	660	716	/
Halocarbon 14	/	DIN 6	320 or 580	716	/
Helium	BS 341 nr.3	DIN 6	580	718	22-R or 23-R
Hydrogen	BS 341 nr.2	DIN 1	350	724	22-L
Hydrogen Chloride	/	DIN 8	330	634	26-R
Hydrogen Fluoride	/	/	660 or 670	638	26-R
Hydrogen Sulfide	/	DIN 5	330	722	/
Iso-Butane	/	/	510	/	/
Krypton	/	DIN 6	580	718	22-R or 23-R
Methane	BS 341 nr.2	/	350	/	/
Methyl Chloride	/	/	660	/	/
Natural Gas	/	/	350	/	/
Neon	/	DIN 6	580	718	22-R or 23-R
Nitric Oxide	/	/	660	/	/
Nitrogen	BS 341 nr.3	DIN 10	580	718	22-R or 23-R
Nitrogen Trifluoride	/	DIN 8	330 or 670	640	/
Nitrous Oxide	BS 341 nr.13	DIN 8	326	712	/
Oxygen	BS 341 nr.3	DIN 9	540	714	22-R or 23-R
Phosphine	/	DIN 1	350	632	/
Propane	BS 341 nr.4	/	510	/	/
Silane	/	/	350	632	/
Silicon Tetrachloride	/	/	330	636	/
Silicon Tetrafluoride	/	/	330	642	22-L
Sulfur Hexafluoride	/	DIN 6	590	716	26-R
Tungsten Hexafluoride	/	DIN 8	670	638	/
Xenon	/	DIN 6	580	718	22-R



Genstar Technologies Company Inc.

4525 Technologies Ave, Chino, CA 91710

Tel: 909.606.2726

Fax: 909.606.6485

www.genstartech.com