

# Regulator Protocol Station

Operation Manual



## Introduction

The GENTEC PSB and PSSL Series Protocol Stations are designed to provide an easy, fast, and safe method to exchange cylinder gas bottles. The Protocol Station eliminates the traditional direct connection between the gas regulator and the cylinder resulting in easy disconnection from the pigtail assembly rather than directly from the regulator.



## Bracket Features

Bracket - Four (4) Ports for inlet or outlet connections. Standard inlet at 270° and outlet at 180°  
PSB = Ni Plated Brass or PSSL = 316L Stainless Steel  
Maximum Pressure: 3000 psig  
Bracket Holes for sturdy support  
Mounting Hole Size: 3/8" with mounting screws included

## Component Options

### 1. Regulator

Models R21, R22, R31, R44 - "M" 5 Port Configuration - See Specialty Gas Equipment Catalog for options

Body: Ni-Plated Brass or 316L SS

Diaphragm: 316L SS

Regulator Seat: PCTFE

Inlet Pressure Gauge: Brass or SS

Delivery Pressure Gauge: Brass or SS

Diaphragm Valves: Ni-Plated Brass or 316 SS

### 2. Pigtail

Models: GFPS, GFPT and GRPS Series (Std. GFPS Drawing for 3ft. flexible pigtail: Unisource UFHP-22-025-24H-24H-36.00-A-CCB)

Lengths: 2ft. 3ft. or 6 ft. 316 SS or Teflon lined Flexible Pigtails. Rigid Pigtails 316L SS only.

### 3. Check Valve

Model: CV Series

Body: 316L SS

Connections: 1/4" NPT (M or F) inlet and outlet optional

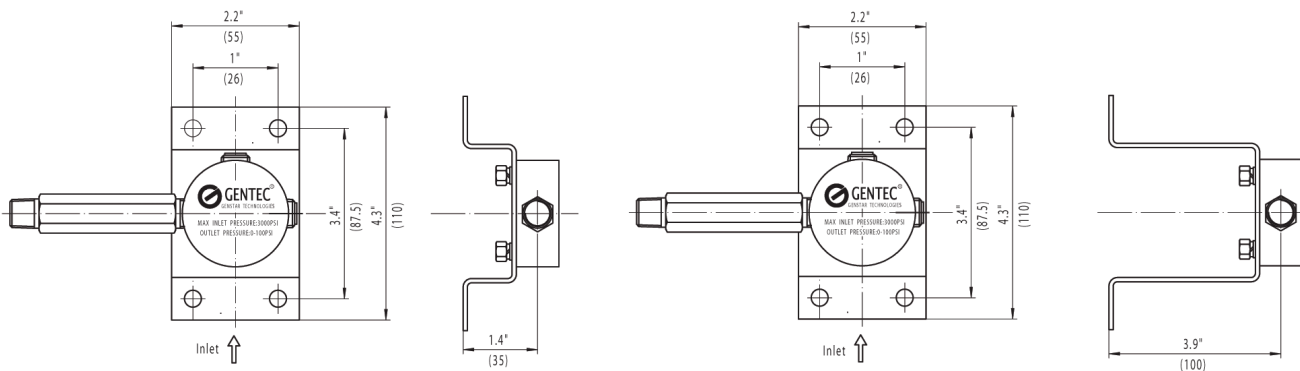
### 4: CGA Cylinder Connection

Model: BP-CGA and SS-CGA

Body: Ni-Plated Brass or 316L SS

Connections: 1/4" NPT (M or F) inlet and outlet depending on CGA

## Bracket Installation



### Notes:

1. Recommended Bracket Mounting Height for a 51" cylinder - 62"
2. Maximum Working pressure lessor of 3000 psig or per CGA

## Component Installation

### Flow Path:

PROCESS > **Regulator** > outlet tee **Bracket** inlet tee > **Pigtail** > outlet **Check Valve** inlet > outlet **CGA** inlet > CYLINDER

1. Bracket shall be mounted to Wall or UNISTRUT
2. Use teflon Tape as required
3. Regulator shall be mounted to outlet Bracket Tee
4. Assemble pigtail if check valve and CGA provided separately
5. Connect check valve to pigtail outlet
6. Connect CGA to check valve inlet
7. Connect pigtail assembly to inlet bracket tee
8. Connect CGA to gas cylinder bottle
9. Connect Regulator to Bracket Outlet Tee
10. Attach Optional Gas Cylinder Holder as required