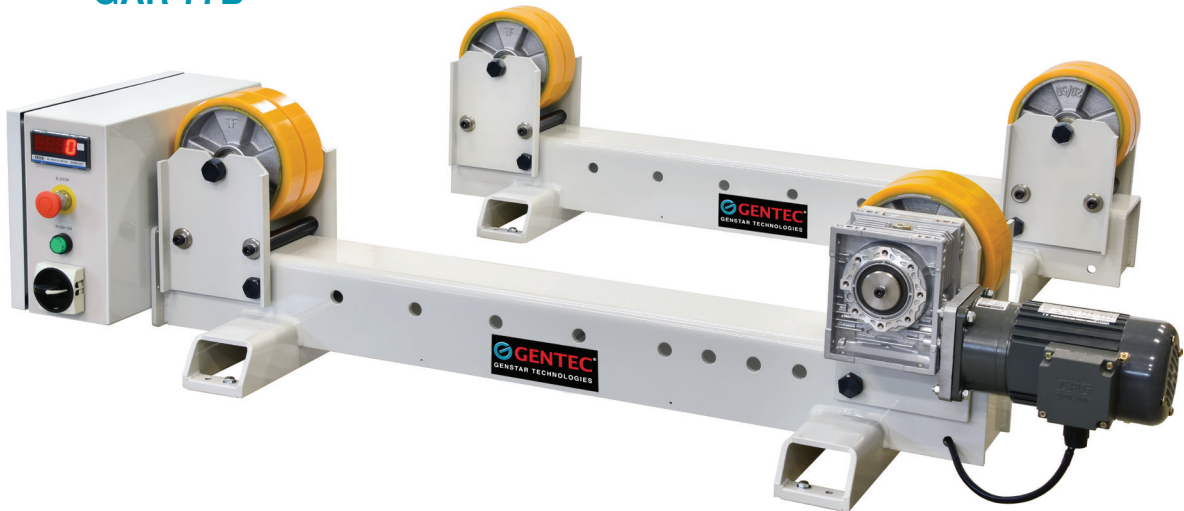


**GAR-77B****GAR-22****Features**

- Ideal for pipe & vessel rotation
- Can rotate pipe from 2,200 lbs to 7,700 lbs
- Quick and accurate roll centering adjustment
- High frequency protected
- Metallic rollers bound with polyurethane
- GAR-22 includes on/off foot pedal w/ 9 ft cable
- GAR-77B includes hand pendant remote w/ 24 ft cable

## GAR-198K



### Features

- Can rotate pipe up to 198,000 lbs
- Superior Worm gear reducer designed to provide high torque and low backlash
- Synchronized AC inverter drive control for two motors
- Metallic rollers bound with natural rubber
- Designed with symmetrical rollers for quick and accurate centering adjustment
- Adjustment bolt system to allow for different diameter cylinders
- Standard hand pendant with Forward-Stop-Reverse, speed potentiometer
- High frequency protected control box

## Specifications

Model	unit	GAR-22	GDR-22	GAR-77	GAR-77B	GAR-15K	GAR-33K	GAR-66K	GAR-99K	GAR-132K	
Power input	-	AC 110-240V 50/60Hz 1 Phase		AC 220-240V 50/60Hz 1 Phase	AC 220V-240V, 50/60Hz, 1 Phase		AC 220V / 380V, 50/60Hz, 3 Phase				
Drive motor	hp	1/12		1/2		1/2	1/2 + 1/2	1 + 1	2 + 2	2 + 2	
Overall length (A) (Drive / Ider)	in	18/17		30/27		59/49	65/49	118/97	122/97	127/97	132/97
Overall width (B) (Drive / Ider)	in	12/6		16/11		19/15	19/15	31/31	35/31	37/35	39/37
Overall height (C) (Drive & Ider)	in	13		20		15	15	25	25	25	25
Diameter range (D)	in	Ø 0.78-31		Ø 0.35-55		Ø 1.96-118	Ø 1.96-118	Ø 11.81-216	Ø 11.81-216	Ø 11.81-216	Ø 11.81-216
Roller diameter (E)	in	Ø 7.78		Ø 7.78		Ø 7.78	Ø 7.78	Ø 16	Ø 16	Ø 16	Ø 16
Roller width (F)	in	1.96		3.93		3.93	5.95	4.92	7.09	9	11
Load capacity (Drive + Ider)	lbs	2,200		7,716		7,716	13,000	33,000	66,000	99,000	132,000
Speed range	in / min	3-62		2-47		2-47	2-47	3.93-59	3.93-59	3.93-59	3.93-59
Roller type		Polyurethane					Rubber	Rubber metal			
Net weight (Drive / Ider)	lbs	119 (82 / 37)		363 (242 / 121)		376 (224 / 152)	533 (330 / 203)	2,660 (1,485 / 1,175)	3,065 (1,785 / 1,280)	3,572 (2,050 / 1,522)	4,078 (2,314 / 1,764)

## Dimensions

