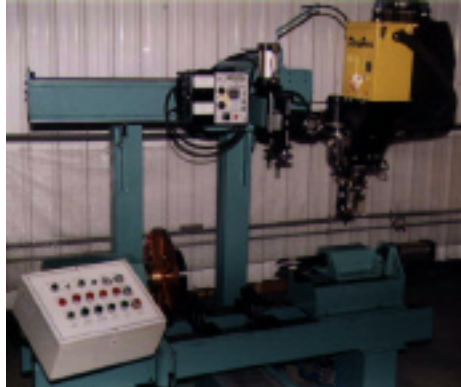


CIRCUMFERENTIAL WELDER

GENTEC CW-1000/3000 Series



- Welds a variety of circular parts
- Pneumatic clamping of tailstock, provide 6"/150mm stroke
- All unit are high frequency protected
- System utilizes sequencer with original sensor control with start delay and adjustable over weld settings
- Optional equipment and controls may be easily adapted for greater versatility

SPECIFICATION

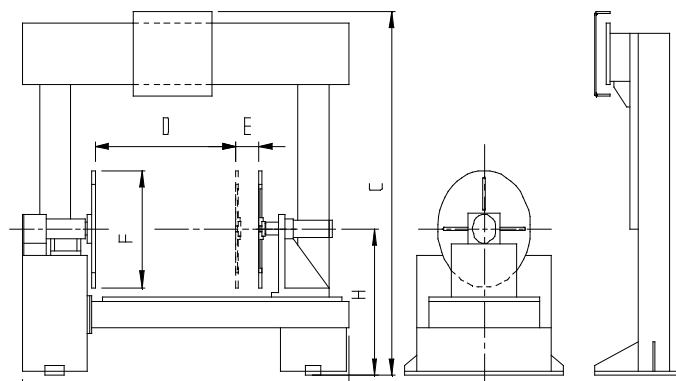
MODEL	UNIT	CW-10XX	CW-30XX
POWER INPUT	~	3 PHASE 220/380V 50/60Hz	
PART WEIGHT CAPACITY	lb	2200	6600
PART LENGTH CAPACITY (D)*	in	24-236	47-236
PART DIAMETER CAPACITY	in	31.5	59
WELDING EQUIPMENT CAPACITY	lb	330	330
TALSTOCK STROKE(E)	in	6	6
TABLE DIMENSION(F)	in	24	24
ROTATION SPEED	rpm	A:0.15-3 B:0.07-1.5	A:0.1-2 B:0.05-1
TABLE PILOT HOLE DIA. *DEEP	in	4*0.25	4*0.25
TABLE SLOT BOLT SIZE	-	M12	M12
EARTHING	Amp	600	600
ROTATION MOTOR	hp	1/4	1/2
OVERALL LENGTH (A)	in	47+(D)	71+(D)
OVERALL WIDTH (B)	in	55	63
OVERALL HEIGHT (C)	in	75	83
CENTER TO FLOOR (H)	in	34	36
RATED CENTRE OF GRAVITY	in	12	12
ECCENTRIC LOAD TORQUE RATING	lb-in	26000	78000
TAILSTOCK PNEUMATIC PRESSURE	PSI	500	500

* CW-206 (D) =600mm

Option_

- 1 CW-011 NON-POWERED CARRIAGE
- 2 CW-012 AIR LIFT CRADLE SYSTEM
- 3 CW-013 POWER TILT HEADSTOCK (CW-10XX)
- 4 CW-014 POWER TILT HEADSTOCK (CW-30XX)
- 5 CW-015 PNEUMATIC ECCENTRIC MOVEMENT OF THE TAILSTOCK(CW-10XX/30XX)
- 6 CW-016 PNEUMATIC TORCH LIFT (CW-10XX/30XX)

DIMENSION



GENSTAR TECHNOLOGIES CO., INC.

4525 Edison Avenue
 Chino, CA 91710, U.S.A.
 TEL: (909) 606-2726
 FAX: (909) 606-6485
 E-mail: info@genstartech.com
<http://www.genstartech.com>