

# Gauge Valves

## ■ GV1 SERIES GAUGE VALVES



### ■ Features

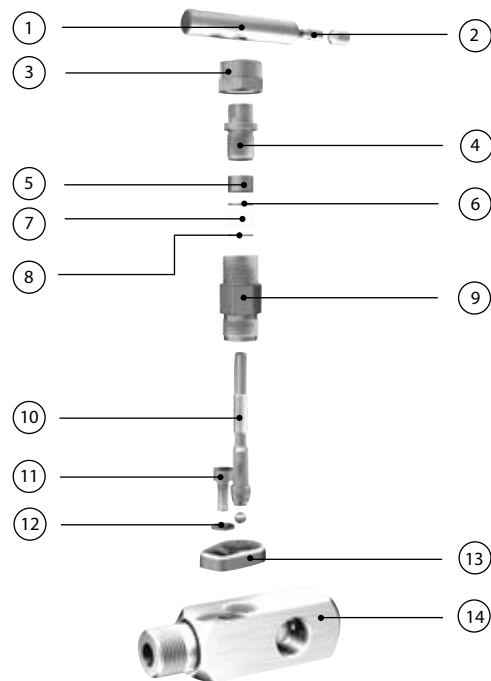
- Compact construction
- Non-rotating ball tip design
- Multi-port allows versatile positioning of gauges and pressure switches
- Inlet Connection: 1/2" or 3/4" NPT  
Outlet connection: 1/2" Female NPT
- Bonnet Lock Pin helps prevent accidental separation of bonnet from the body
- Maximum operating pressure: 6000 psi (414 bar)
- Leakage across seat: < 0.1 std cm<sup>3</sup>/min
- Operating temperature: -63°F ~ 450°F (-53°C ~ 232°C)
- Cleaned and degreased for oxygen service according to CGA G-4.1 and ASTM G93 Class C, respectively

#### Caution:

Do not mix or interchange valve components with those of other manufacturers.

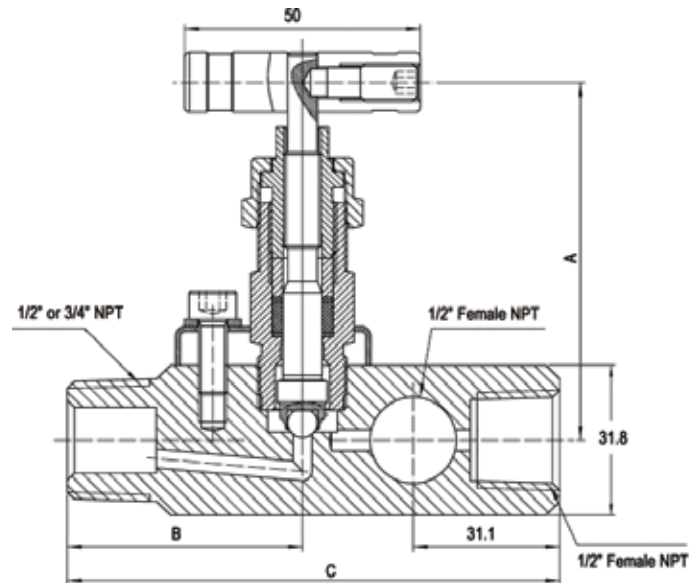
### ■ Materials of Construction

Components	Material
1 Handle	316 SS
2 Handle Pin	316 SS
3 Lock Nut	316 SS
4 Packing Bolt	416
5 Packing Ring	316 SS
6 Packing Supports	Reinforced PTFE
7 Packing	PTFE
8 Packing Supports	316 SS
9 Bonnet	316 SS
10 Stem	316 SS
11 Set Screw	316 SS
12 Washer	316 SS
13 Bonnet Lock Plate	316 SS
14 Body	316 SS



## ■ GV1 SERIES GAUGE VALVES

### ■ Dimensions



English Units

Model	Inlet / Outlet (in.)	Dimension (in.)			
		Hole dia.	A	B	C
SS-GV1ST-NT12-FNT8	3/4" NPT / 1/2" NPT(F)	0.157	3.39	2.17	4.33
SS-GV1ST-NT8-FNT8	1/2" NPT / 1/2" NPT(F)				

### ■ Ordering Information

